



SANTA --- BIOARK

Clinical Case Book



SANTA

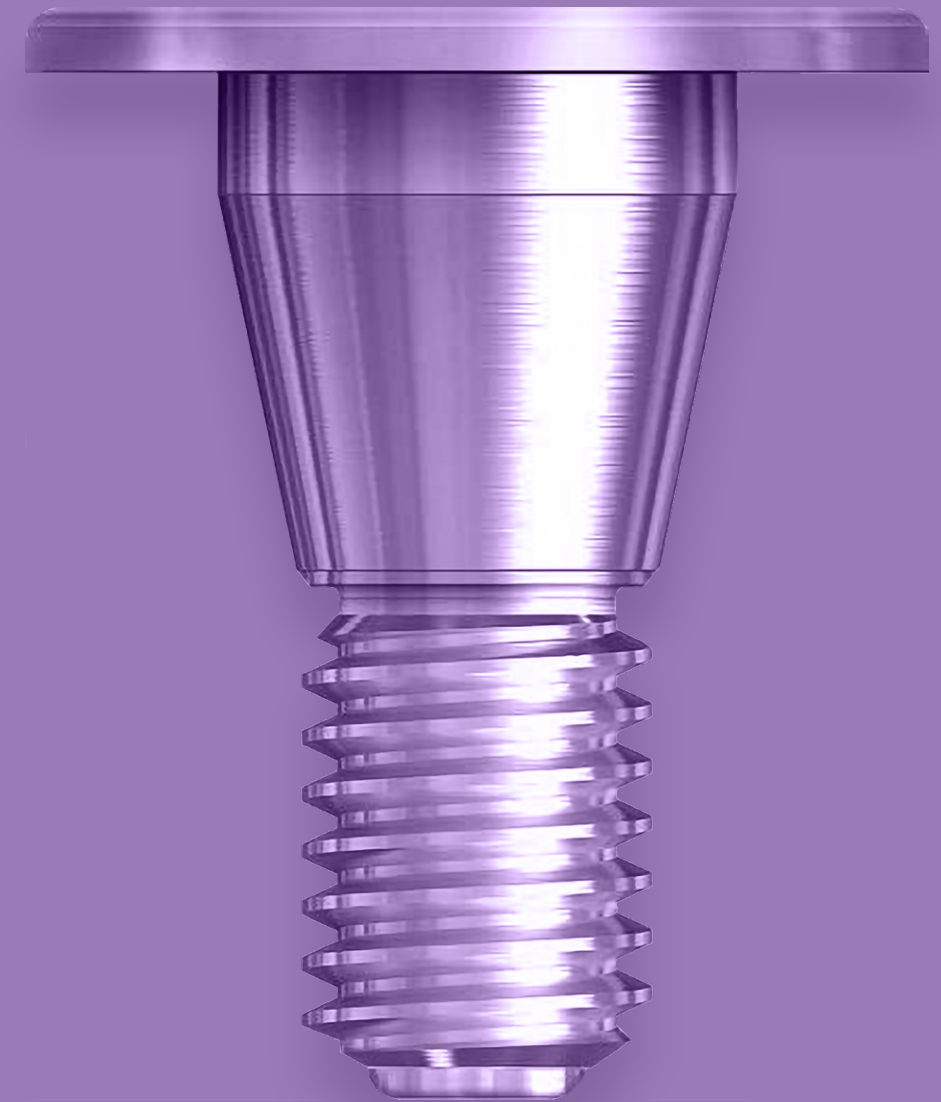
BIOARK

06	SANTA FEATURES
07	Various Clinical Cases I
08	Various Clinical Cases II
09	Various Clinical Cases III
10	Various Clinical Cases IV
11	Various Clinical Cases V
12	Various Clinical Cases VI
13	Various Clinical Cases VII
16	BIOARK FEATURES
17	Clinical Studies I
18	Clinical Studies II
19	Clinical Studies III
20	Comparative Clinical Studies I
21	Comparative Clinical Studies II
22	Other Clinical Studies I
23	Other Clinical Studies II
24	Other Clinical Studies III
25	Other Clinical Studies IV

SANTA

Special Sohn's Augmentation Tenting Abutment

BIO7EM
DENTAL IMPLANT SYSTEM

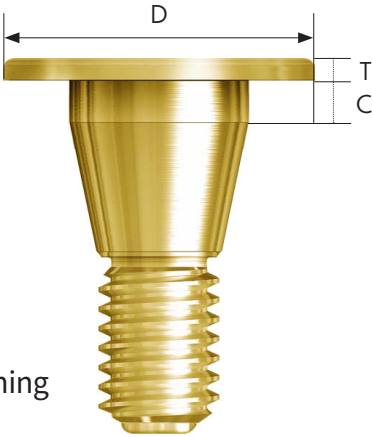


One step closer to the perfection of alveolar bone augmentation

SANTA FEATURES

Main Feature

- Specialized Tenting abutment for Simple 3D ridge augmentation
- Curtailing edentulous healing period
- Curtailing the number of surgery and postop complications
- No bone-harvest requisites, from other sites
- Maintaining bone graft over implant platform
- Relieving pressure on bone graft under soft tissue
- Anti-infection effect stimulating soft tissue healing, thus prevents screw loosening



SANTA video link

T/D	C	Ø 5.0	Ø 6.0
0.4 mm	1	S105	S106
	2	S205	S206
	3	S305	S306
3 mm	3	S335	S336



S10X



S20X



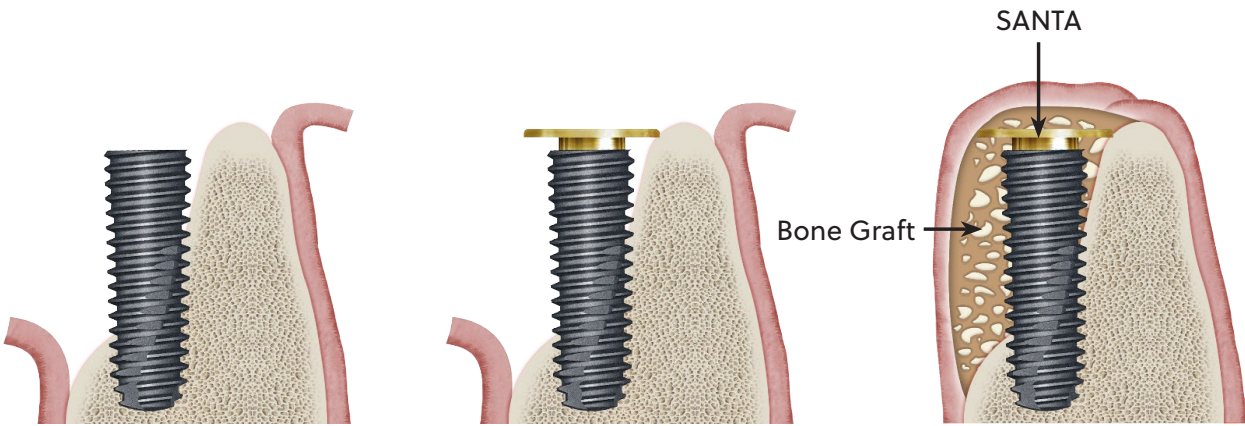
S30X



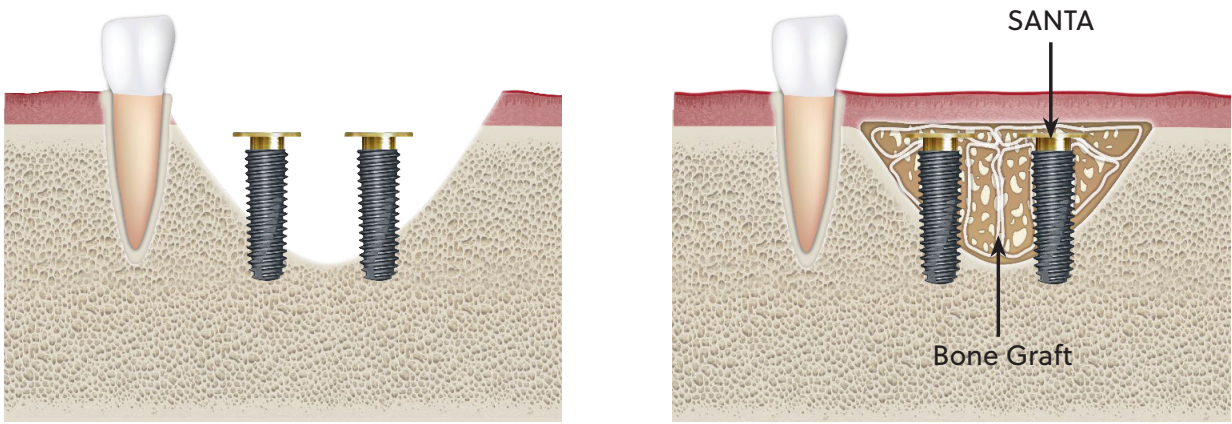
S33X

VARIOUS CLINICAL CASES I

1 Case 1: Single-unit case



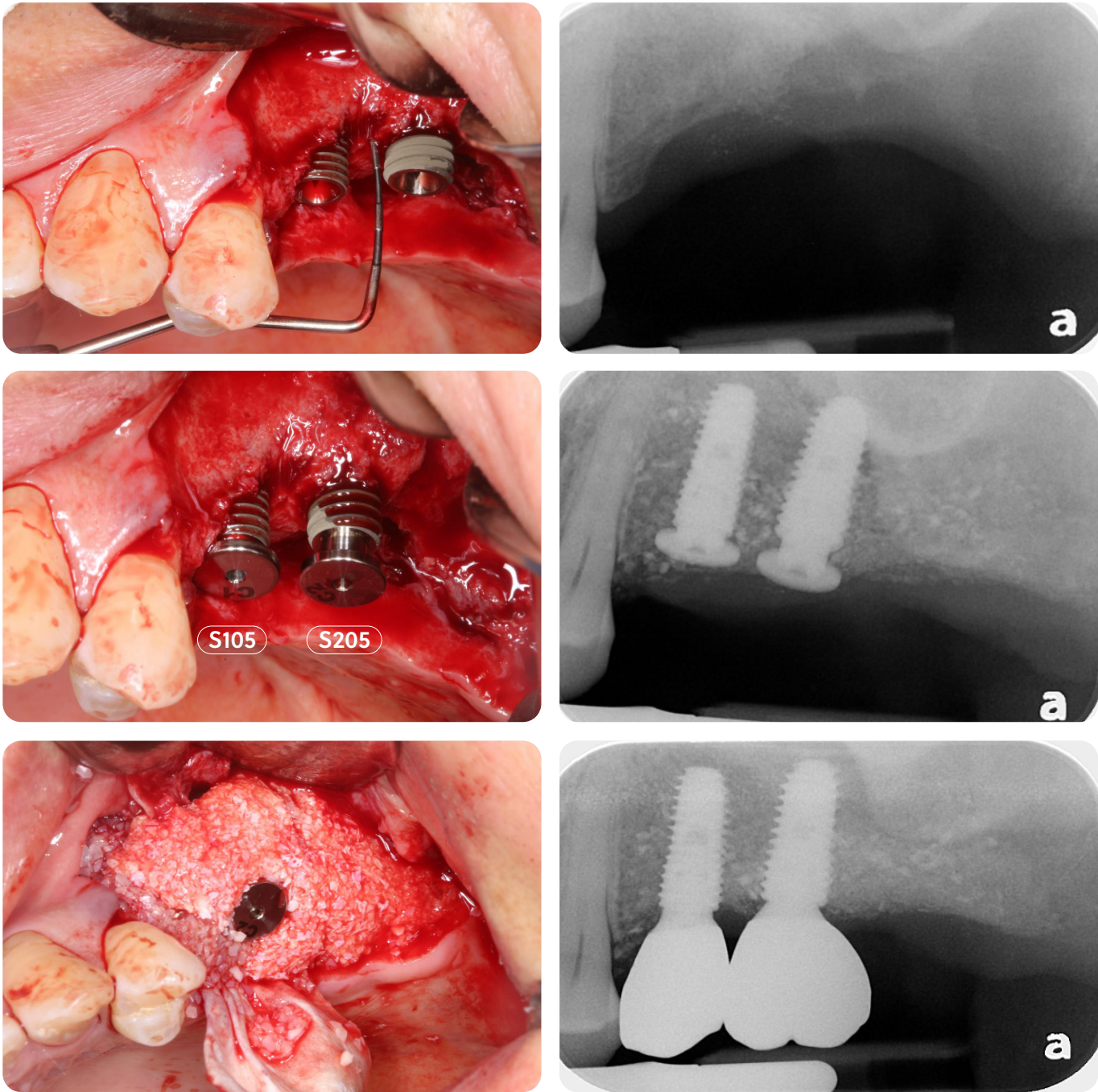
2 Case 2: Multi-unit case



VARIOUS CLINICAL CASES II

Clinical Case

- Simplified 3-D Ridge augmentation in posterior maxilla

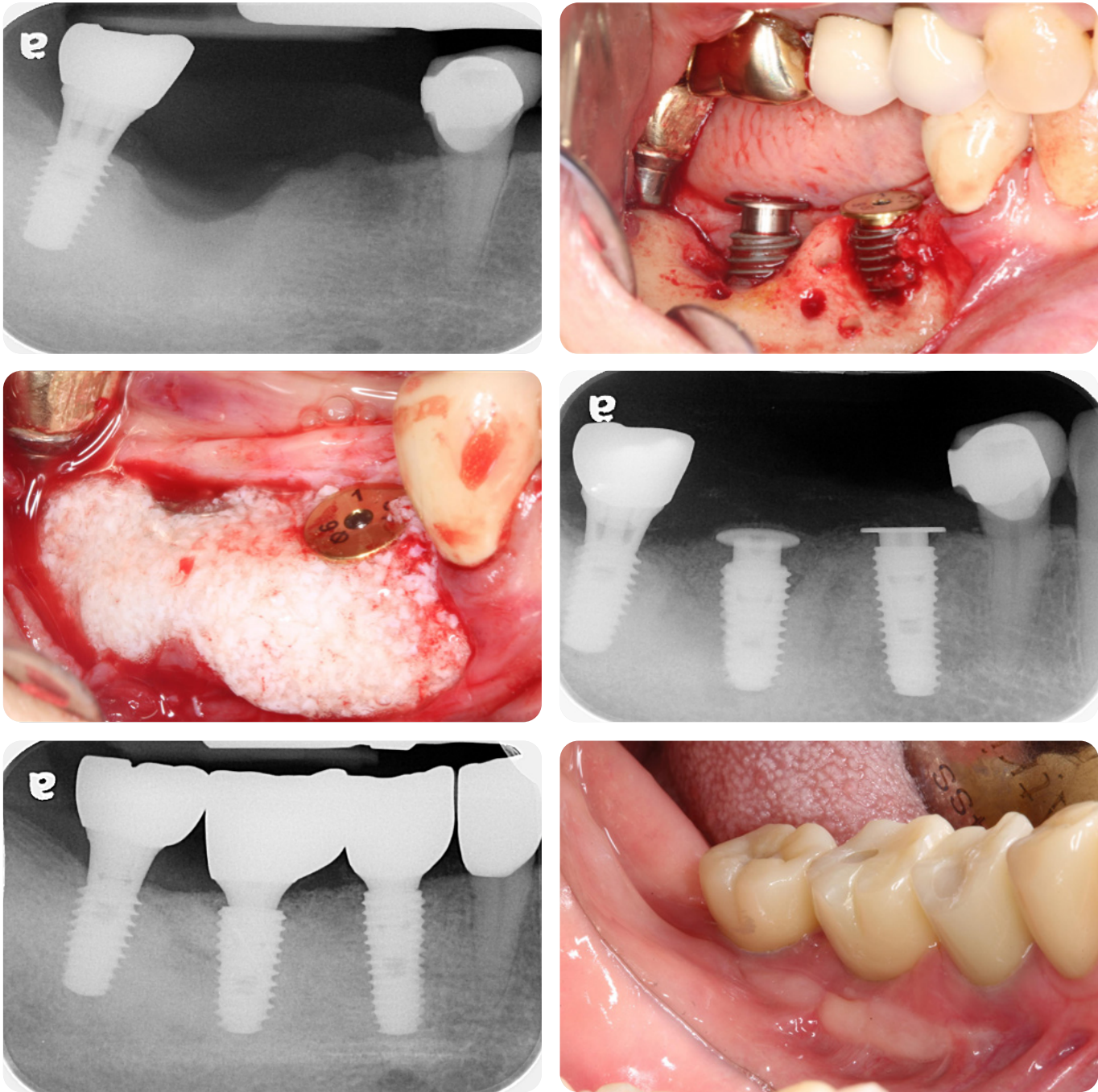


*2 years, postop radiography

VARIOUS CLINICAL CASES III

Clinical Case

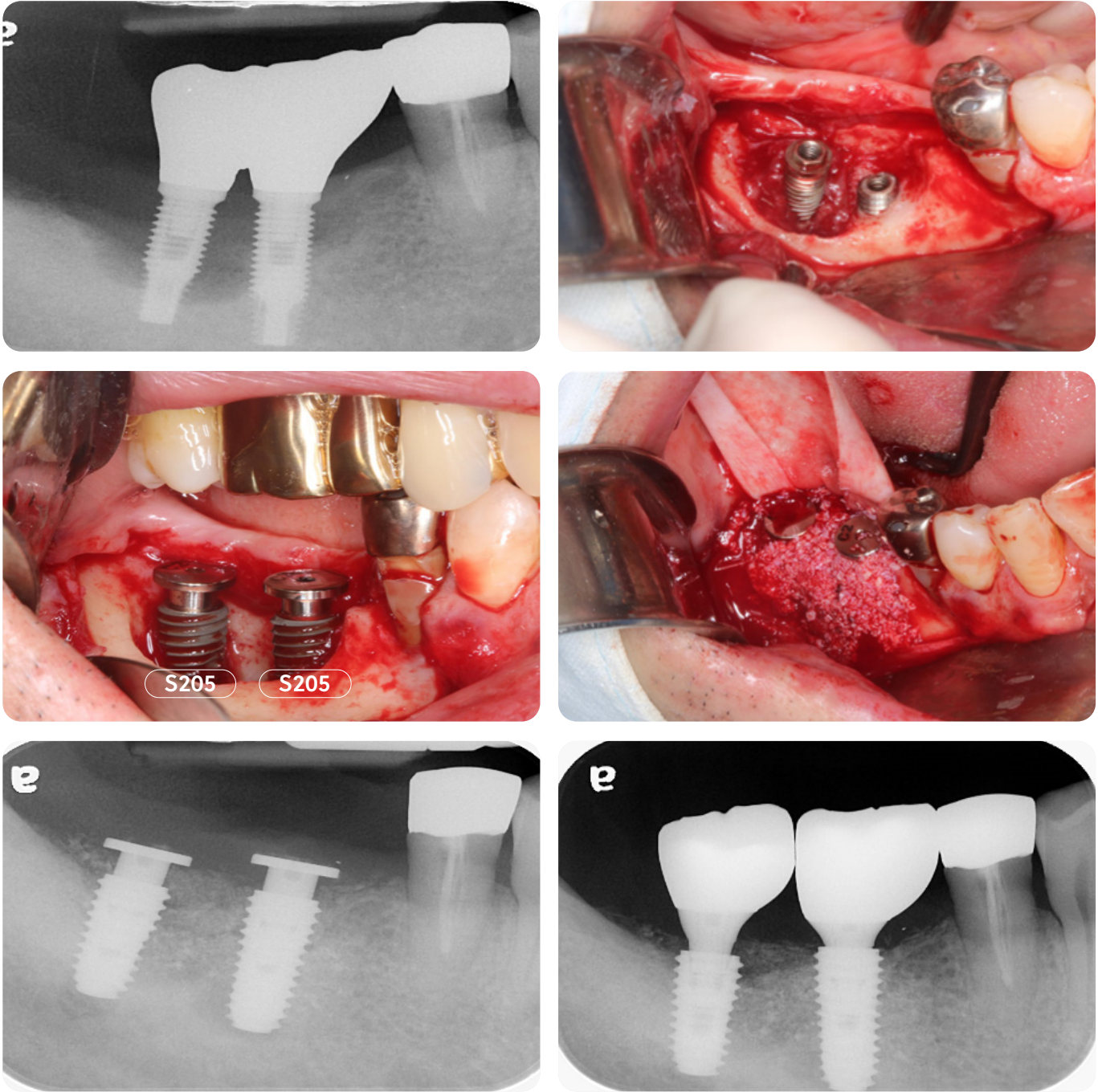
- Simplified 3-D Ridge augmentation in posterior mandible



VARIOUS CLINICAL CASES IV

Clinical Case

- Immediate implant placement and vertical ridge augmentation after removal of failed implants

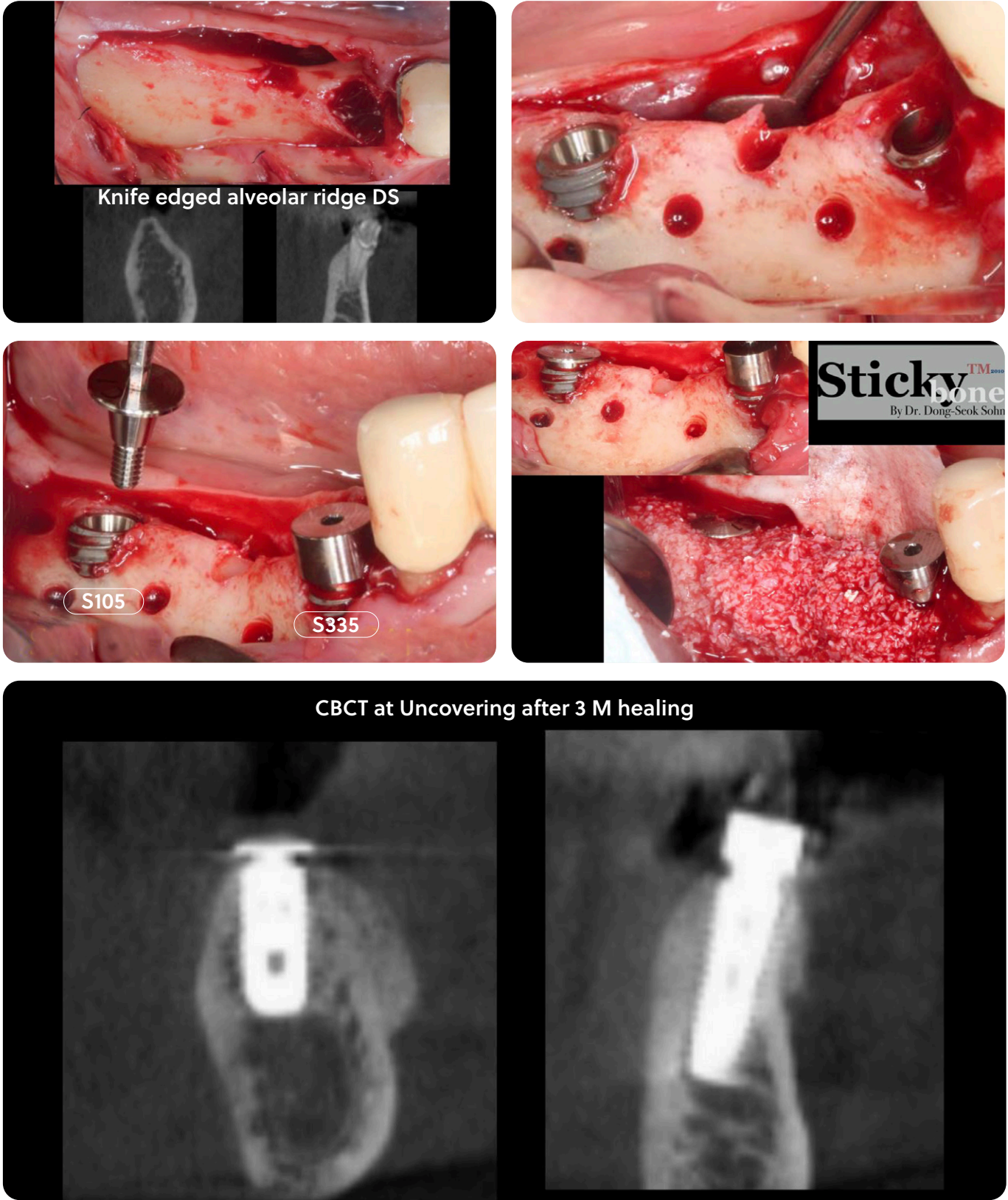


*One year, postop radiography

VARIOUS CLINICAL CASES V

Clinical Case

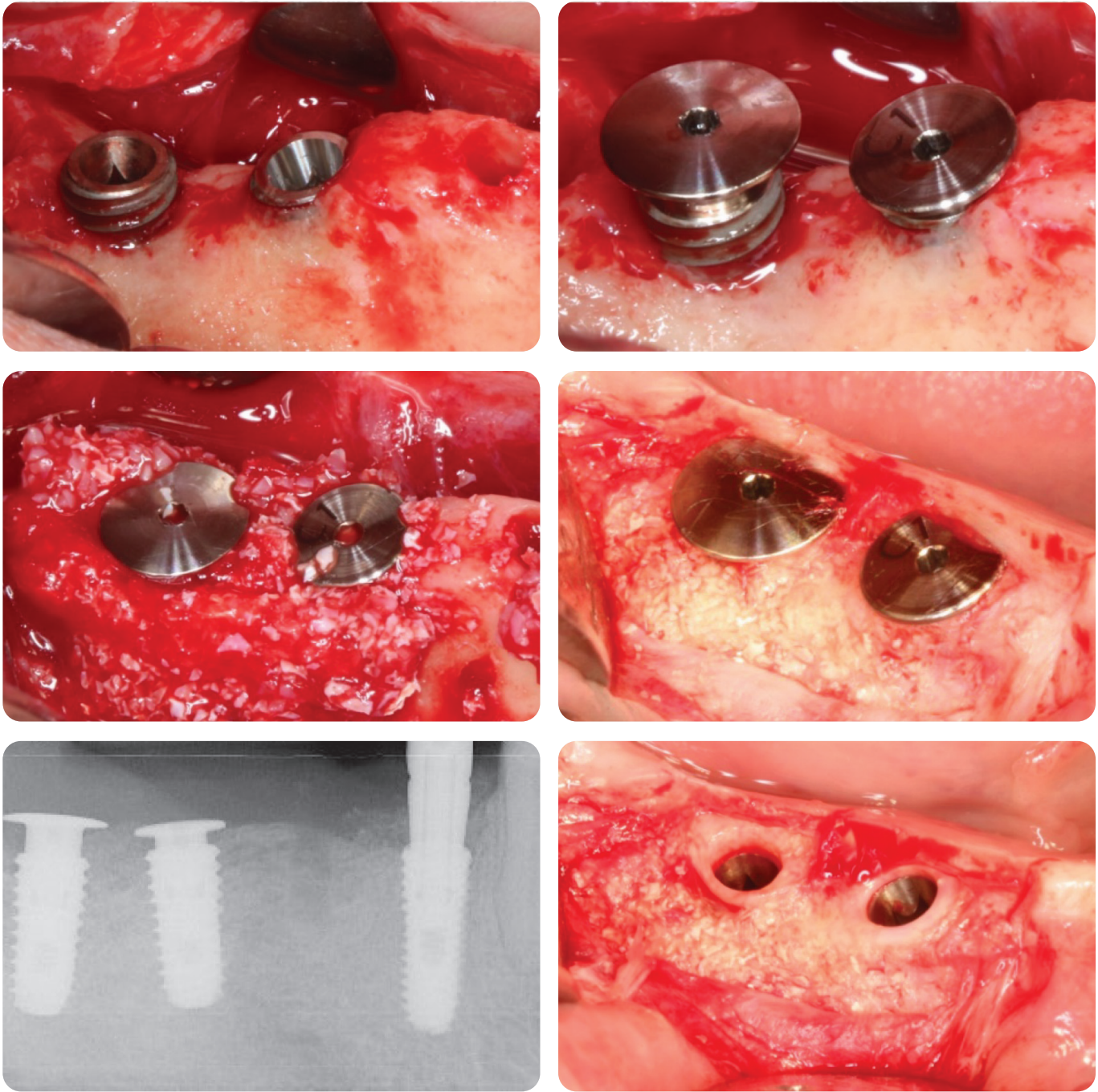
- Simplified horizontal ridge augmentation



VARIOUS CLINICAL CASES VI

Clinical Case

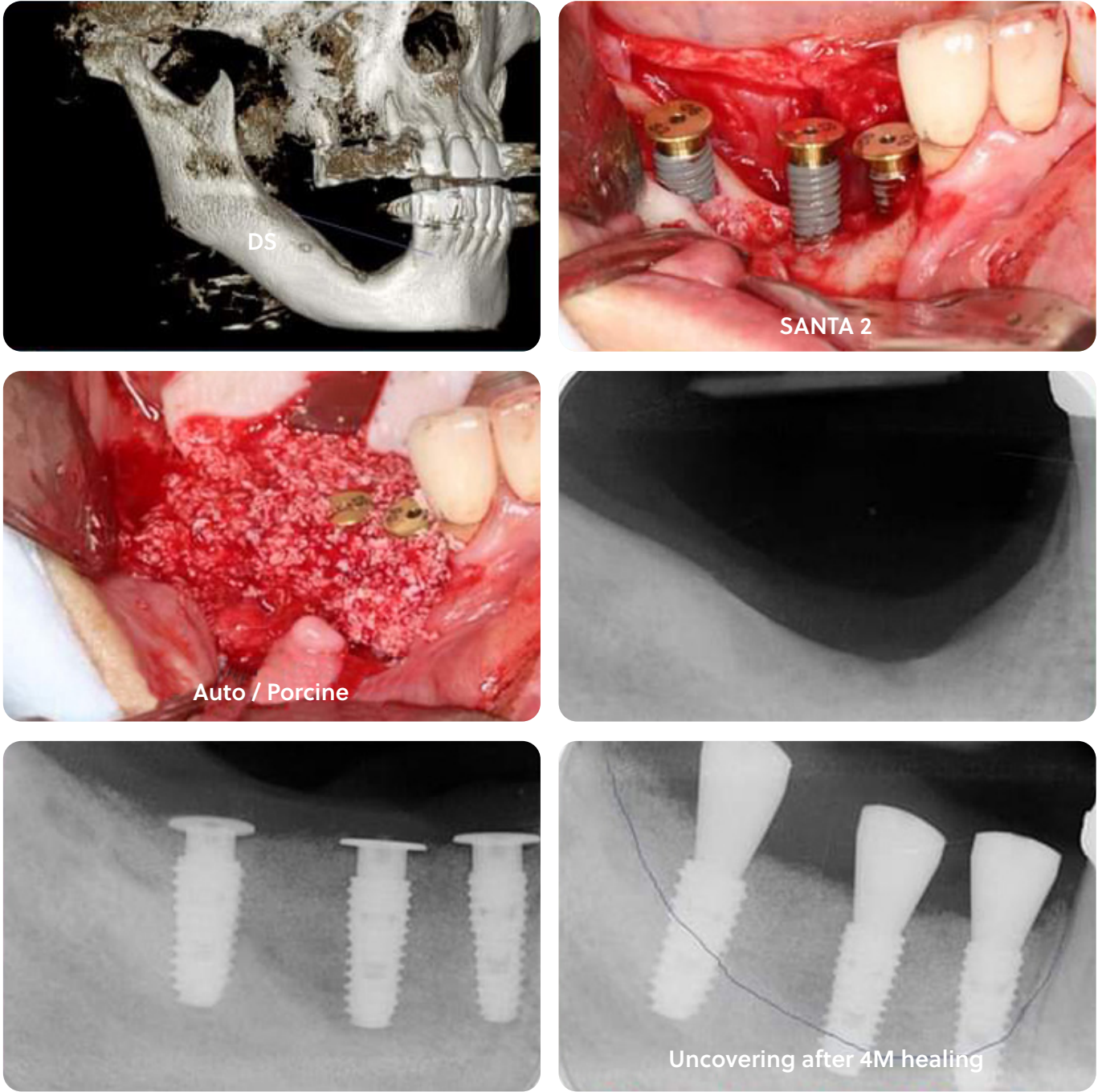
- Simplified 3-D ridge augmentation case, accompanying vertical and horizontal defects in #47 and #46



VARIOUS CLINICAL CASES VII

Clinical Case

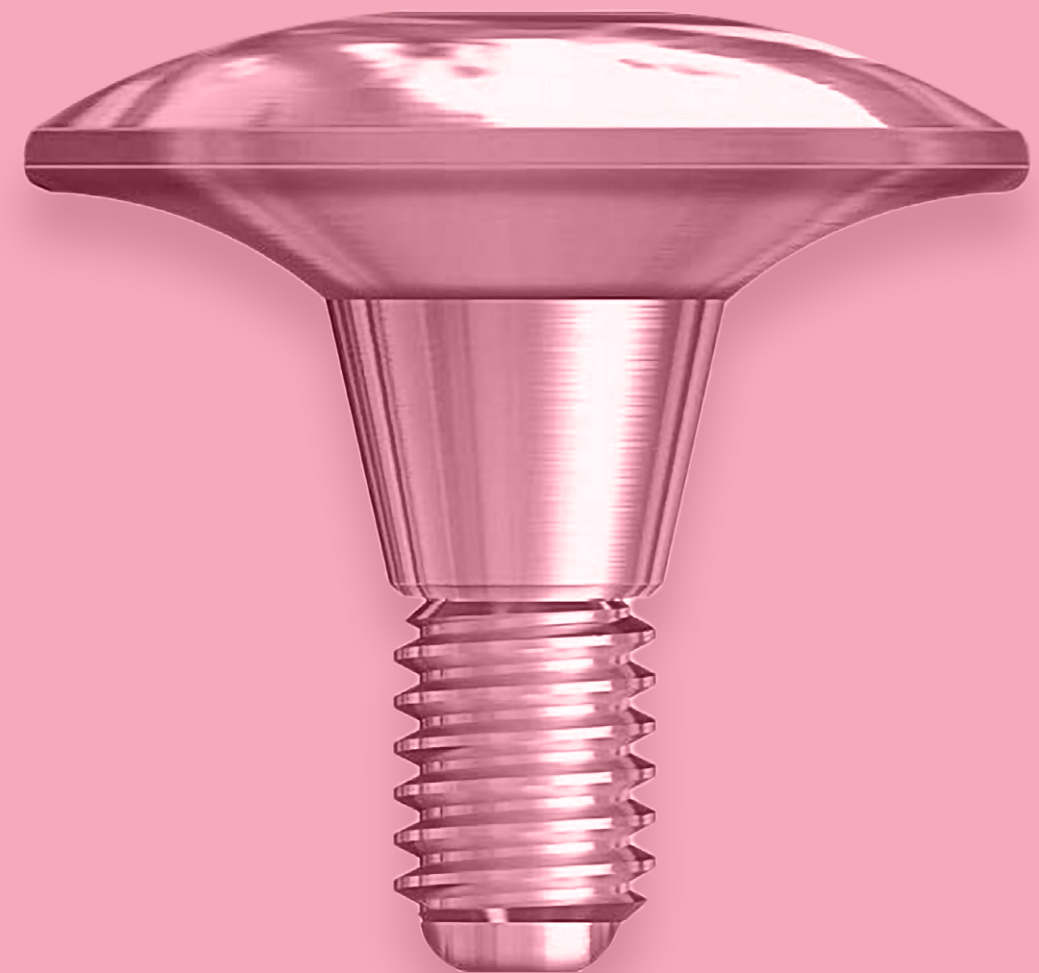
- Easy 3-D ridge augmentation using ASAP protocol



BIOARK

Hidden Space for & Bone Tissue Healing

BIO7EM
DENTAL IMPLANT SYSTEM

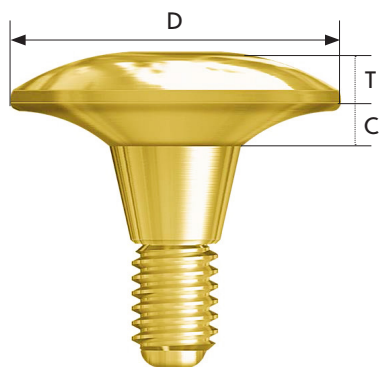


BIOARK, designed to provide underhead cuff space for bone and soft tissue healing, is an exceptional innovation for GBR (Guided Bone Regeneration) and all the intricate cases involving various augmentation procedures, presenting superb osteogenesis

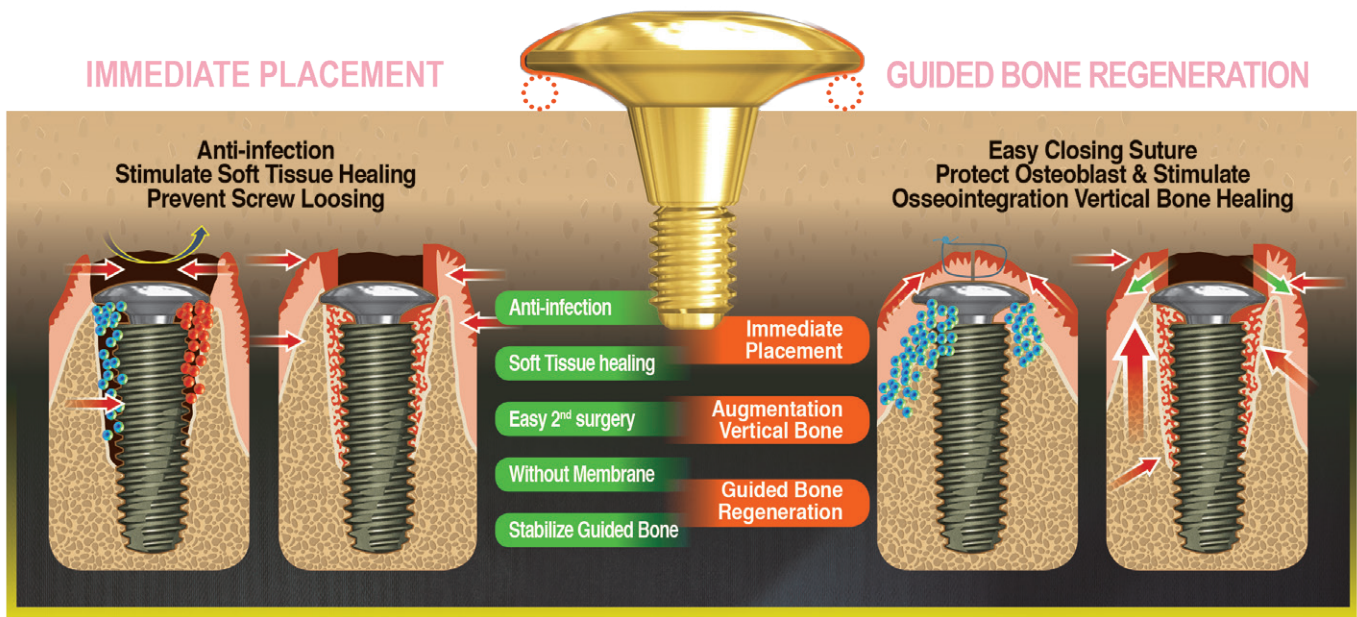
BIOARK FEATURES

Main Feature

- Underhead cuff space for bone & tissue healing
- Leading to easy esthetic implant prosthetics
- Conducive environment to osteoblast



D	T	1.6	1.6	1.6	1.6
	C	1	3	5	7
Ø 5.5		AO553M	AO555M	AO557M	AO559M
Ø 7.2		AO723T	AO725T	AO727T	AO729T
Ø 7.6		AO763T	AO765T	AO767T	AO769T
Ø 8.1		AO813T	AO815T	AO817T	AO819T
Ø 9.0		AO903T	AO905T	AO907T	AO909T



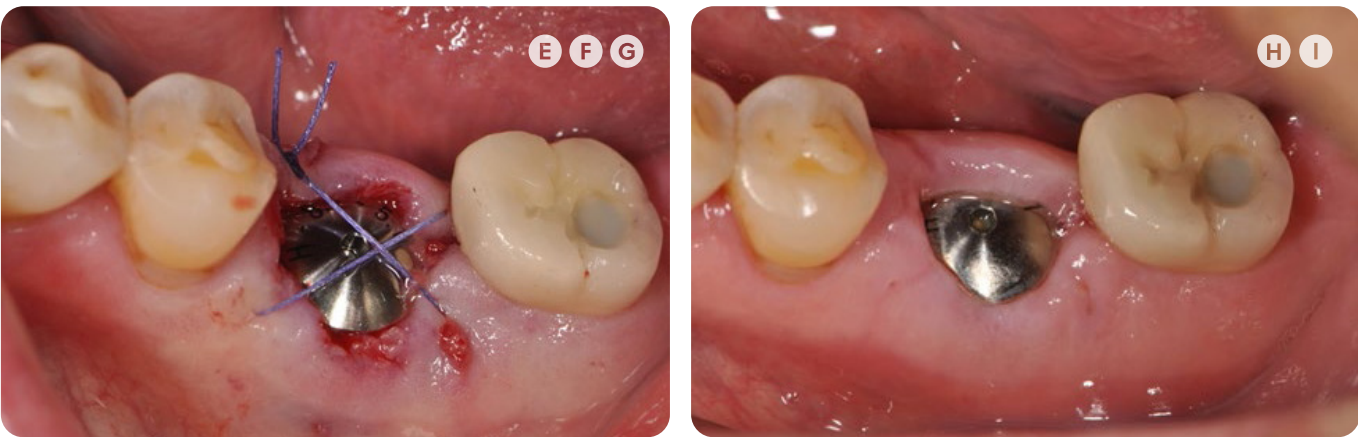
CLINICAL STUDIES I



A. Cautioned extraction to minimize peripheral damage.
B. Removal of peripheral alveolar inflammation.



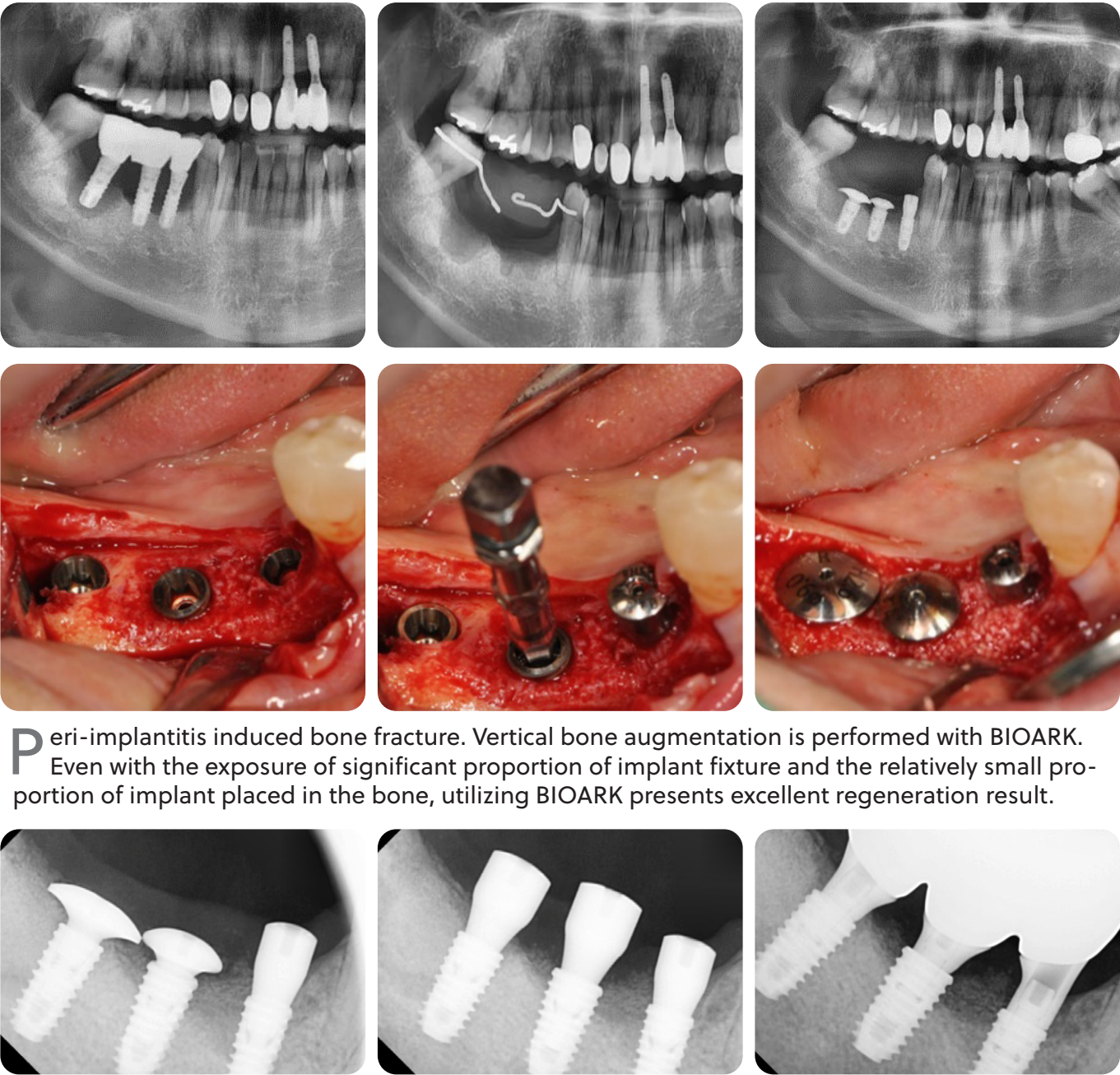
C. Routine implant placement.
D. Checking the appropriate depth and then performing facile bone augmentation.
(Place the fixture mount to prevent the bone material from falling into the implant fixture.)



E. Using BIOARK, then select appropriate length-1 mm below from marginal soft tissue.
F. With enough endentulous space, BIOARK of usual size 1.5 larger than the fixture platform surface is used
(If mesiodistal interference is to be seen, 1 size smaller BIOARK should be applied.)
G. Closing suture of marginal soft tissue, if necessary.
H. Removing the suture after 1 week.
I. Switching to healing abutment after bone regeneration and soft tissue healing.

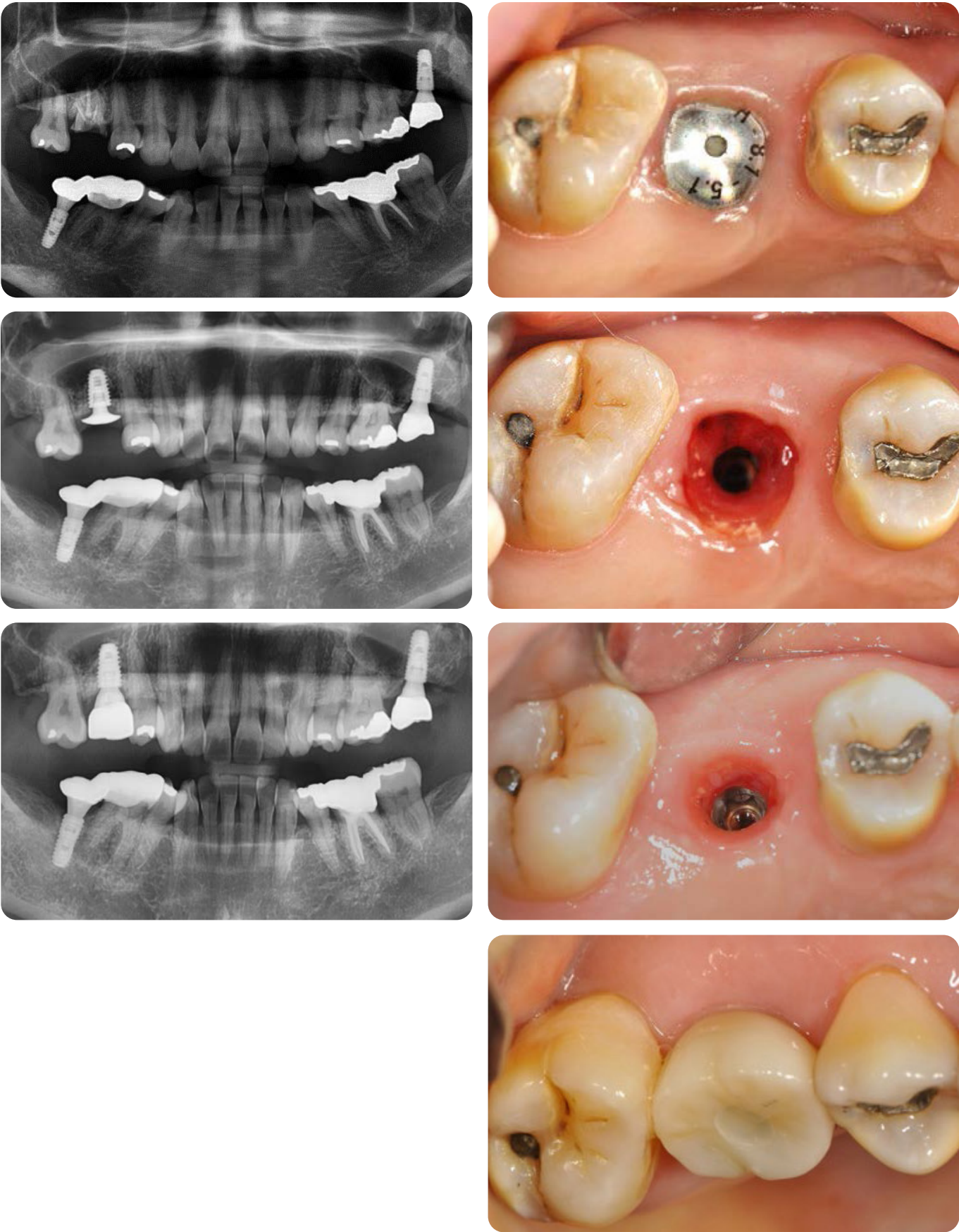
CLINICAL STUDIES II

Regeneration with BIOARK



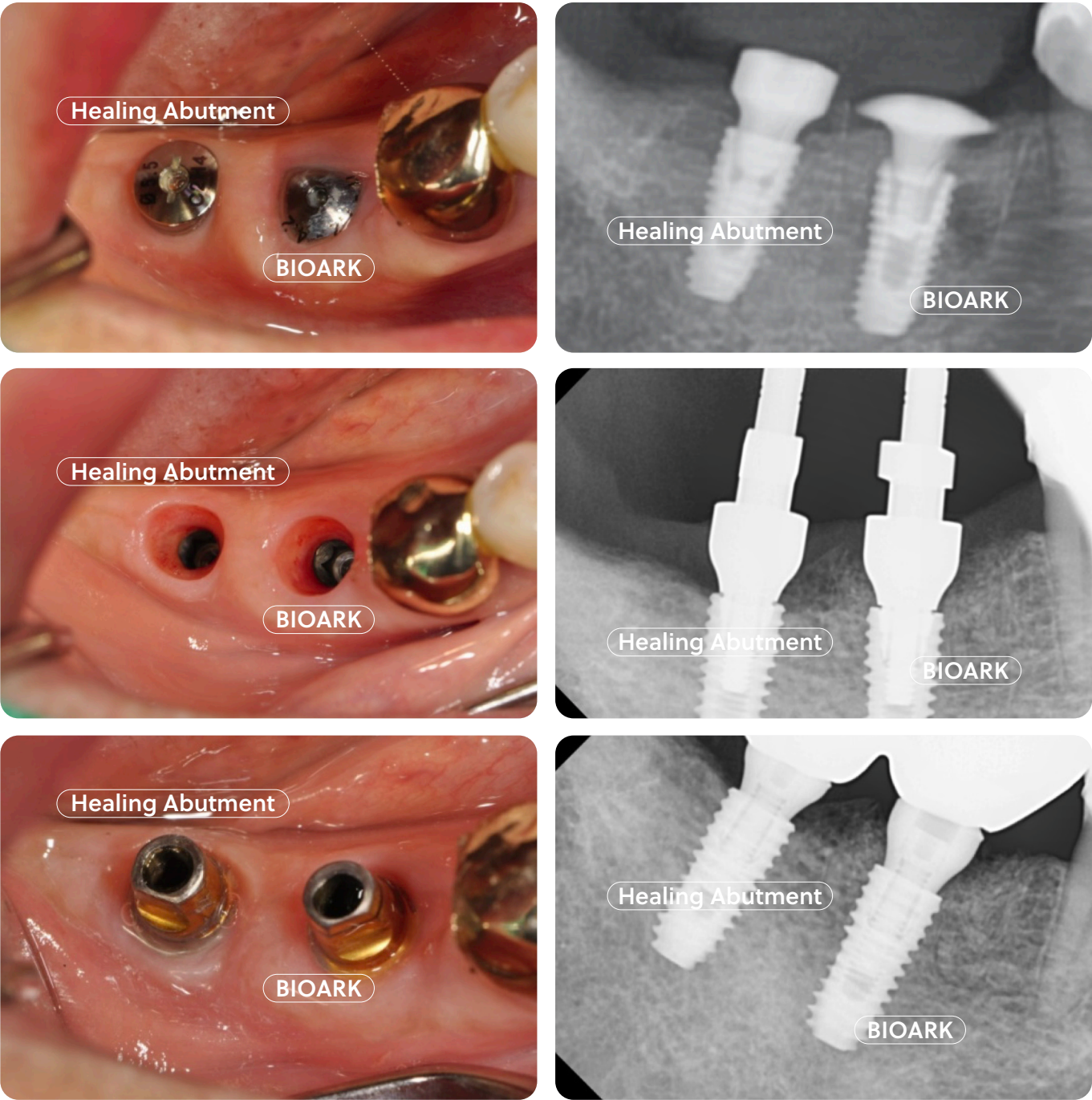
CLINICAL STUDIES III

Excellent primary stability with great papillary formation, with BIOARK



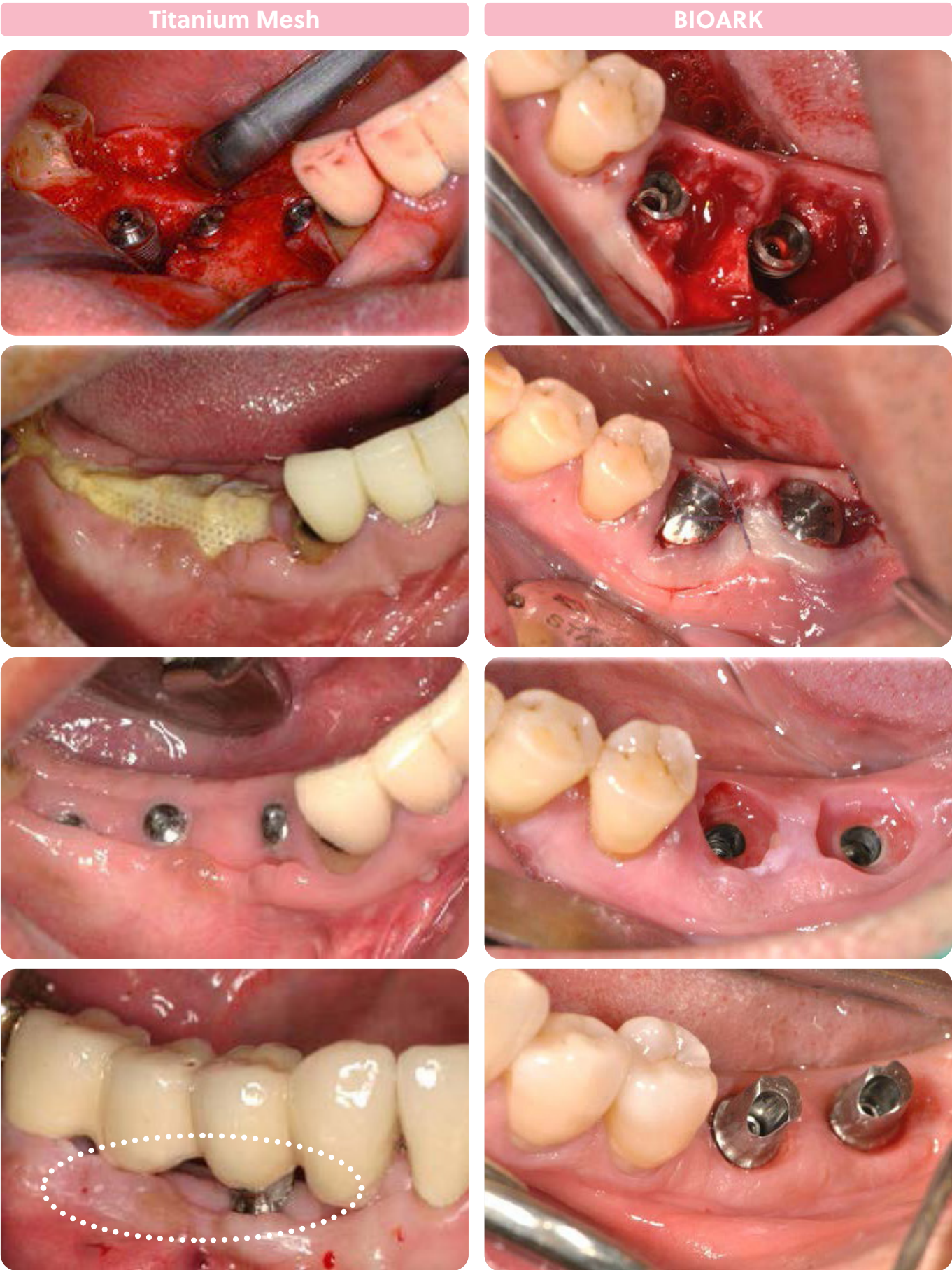
COMPARATIVE CLINICAL STUDIES I

Healing abutment VS BIOARK



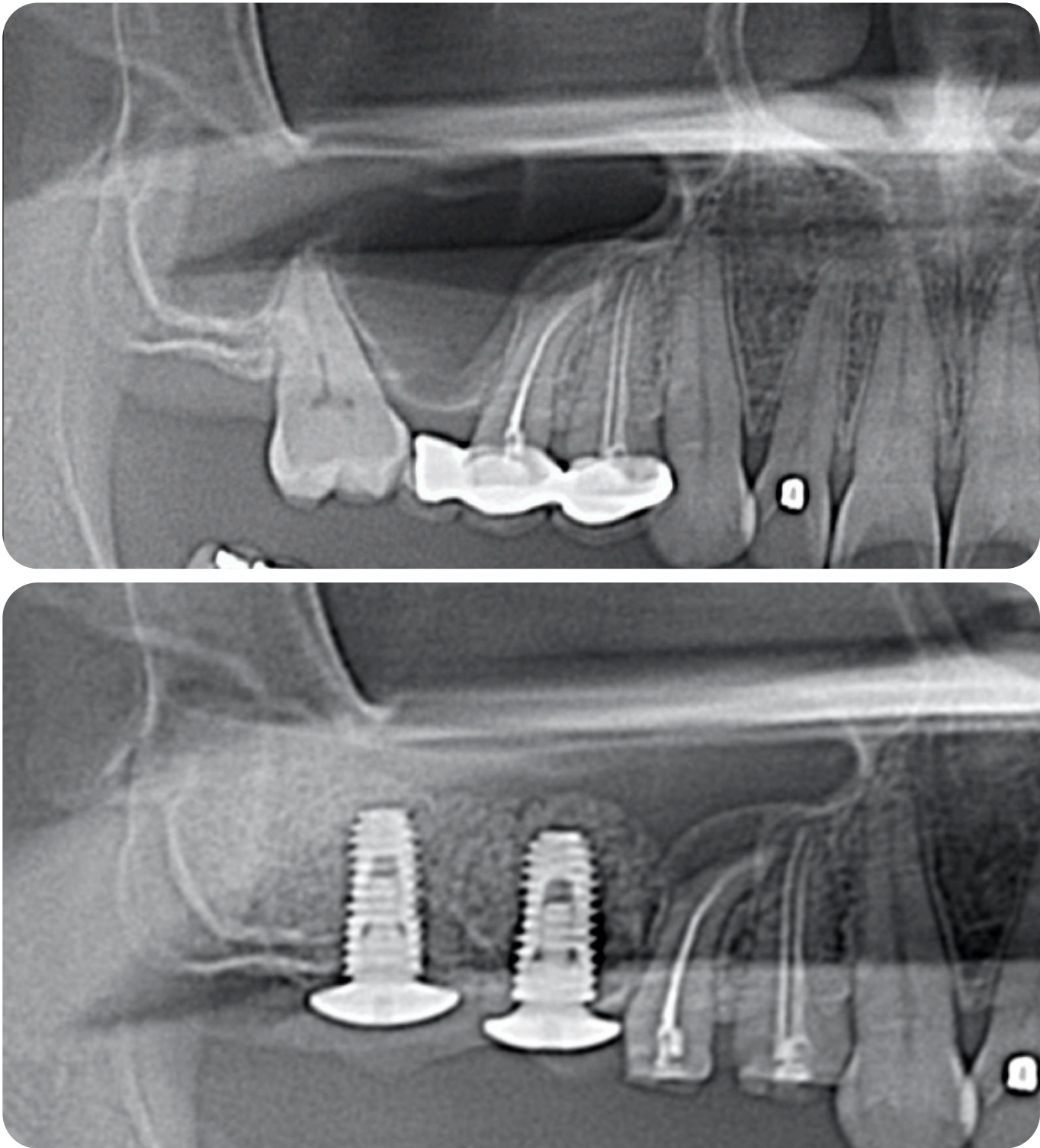
COMPARATIVE CLINICAL STUDIES II

Titanium Mesh VS BIOARK



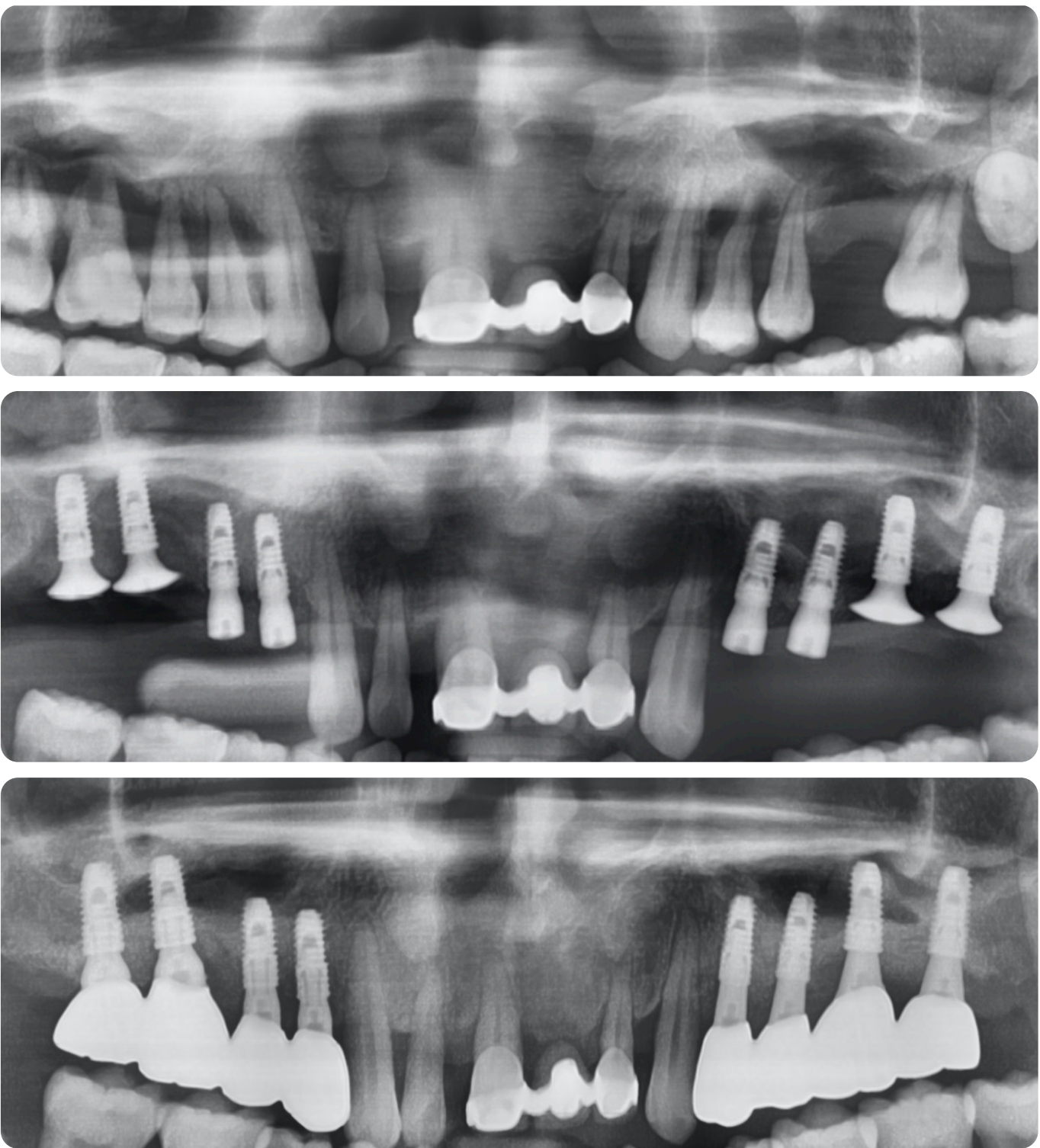
OTHER CLINICAL STUDIES I

BIOARK achieving primary stability with maxillary sinus augmentation
(Scarce alveolar bone of 1 mm)



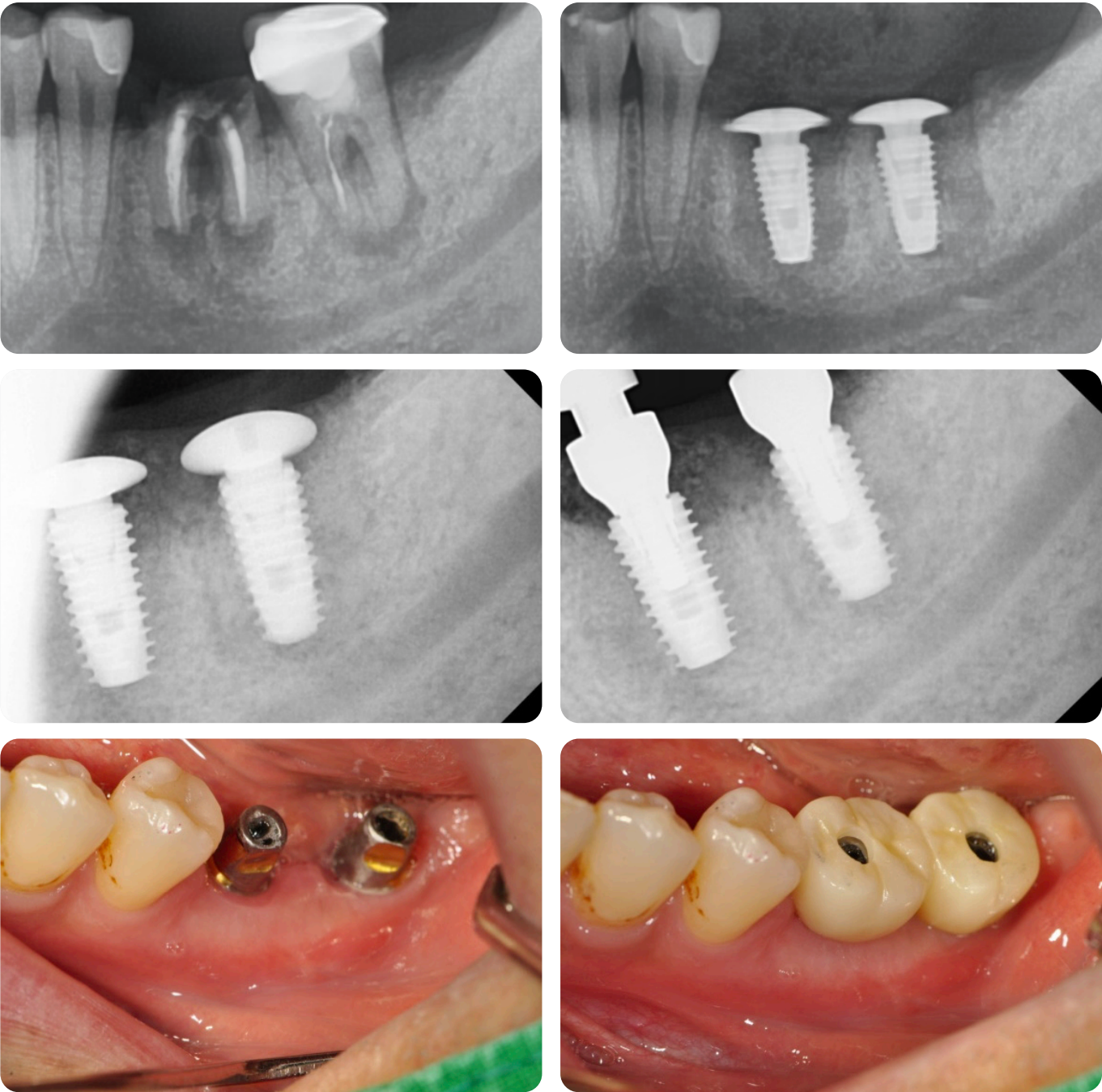
OTHER CLINICAL STUDIES II

Immediate placement & sinus lift with BIOARK



OTHER CLINICAL STUDIES III

Significant healing performance with BIOARK (immediate placement)



OTHER CLINICAL STUDIES IV

BIOARK and off-the-rack abutment (immediate placement)

